

Minimise Downtime, Maximise Convenience

PJ-800 Series
A4 Thermal Mobile Printers



USB-C



NFC



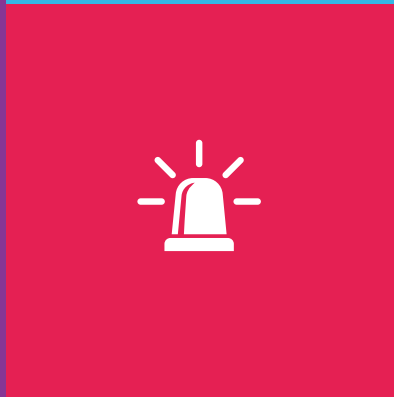
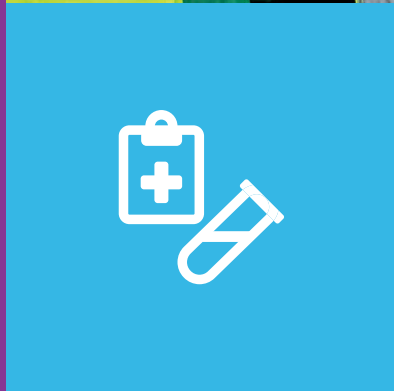
BLUETOOTH



WI-FI



UP TO 300DPI





Minimise downtime and maximise convenience with the latest in direct thermal technology.

Print anywhere, anytime

At just 26cm wide and weighing approximately 480g (excluding battery), the PJ-800 series offers a true A4 mobile solution that fits easily into a briefcase or computer bag and can be mounted in vehicles or other work areas. Its advanced, direct thermal technology offers the most reliable mobile printing solution that allows busy mobile workforces to focus on the job at hand without needing to purchase ink, toner or ribbons to maintain productivity.

Connect your way

With a host of connectivity options available at your fingertips including Bluetooth, dual band Wi-Fi, USB-C and NFC, your mobile printer can adapt to your working environment with ease. Enjoy the convenience of connecting wirelessly via Wi-Fi to your Apple, Android or Windows devices using Airprint, Mopria, iPrint&Scan or Brother Print Service apps to streamline your workflows.

High-quality printing

Experience print speeds up to 13ppm* and high-quality outputs up to 300dpi that ensure your documents are always available when you need them and are of professional quality. In addition, the ability to print on both thin and thicker paper up to 75gsm affords you the flexibility to print a range of documents including invoices, order forms, quotes, contracts and more, using only one device.

Seamless integration and setup

Whether you're deploying a fleet of mobile printers for the first time, or you are upgrading your existing hardware, the PJ-800 series is designed for seamless integration and easy setup to minimise disruptions to your workforce. With the ability to support printer command languages, including ZPL2 emulation, this mobile printer offers compatibility with a variety of embedded systems.

Complete mobile printing solution

The PJ-800 series has a host of optional accessories# available that allow you to tailor it specifically to the needs of your workforce. What's more, if you are upgrading your fleet from our PJ-700 series, most accessories are backward compatible so you can continue using accessories that have been tried and tested within your business to minimise downtime and maximise convenience.

At your side support

Wherever you are in Australia, Brother offers free customer care for the lifetime of your product.

Ultra compact 26cm long



See pages 5 and 6 for optional accessories

*When connected by the USB interface and the fully-charged battery

The complete printing solution that supports mobile workforces

Used in a wide range of applications across a variety of industries, the Brother PJ-800 series is utilised to achieve greater business productivity and a continuous workflow

Healthcare



Healthcare Professionals

Home healthcare workers can now print documents onsite. This helps them avoid delays in distributing care plans and instructions whilst minimising errors by avoiding handwritten documents.

Applications Include:

- Medication lists
- Care plans
- Teaching guides
- Status reports
- Contracts and waivers

Public Safety/Emergency Services

With the ability to print on-the-go, those who work in this industry can avoid clerical errors as well as unnecessary paperwork once back in the office.

Applications Include:

- Citations/Fines
- Patient reports
- Incident reports
- Warning notes



Warehousing and Logistics



Logistics/Deliveries

Drivers can now print from their vehicle or from the customer's premises, increasing productivity every day.

Applications Include:

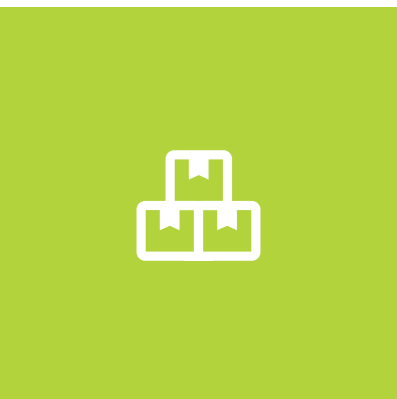
- Invoices
- Delivery notes
- Order sheets
- Stock taking data

Warehousing

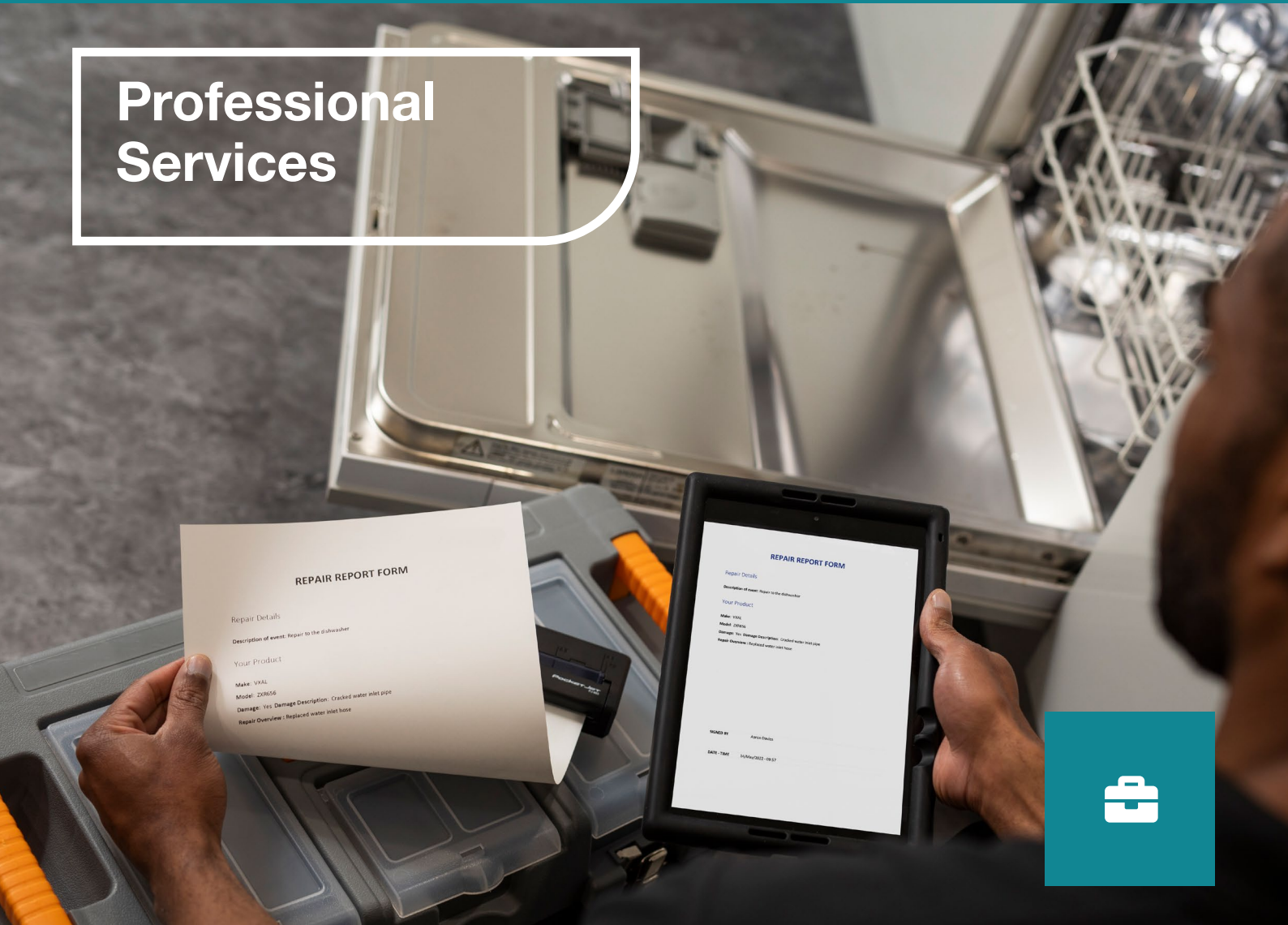
With the most common sizes of shipping labels available and the ability to create custom size labels up to A4 size, there are many uses for these models in the warehouse.

Applications Include:

- Shipping notes
- Order sheets
- Compliance documents
- Quality control documents



Professional Services



Mobile Sales Teams

Busy sales professionals can now print documents from their client's premises, increasing productivity that results in more time to visit other clients.

Applications Include:

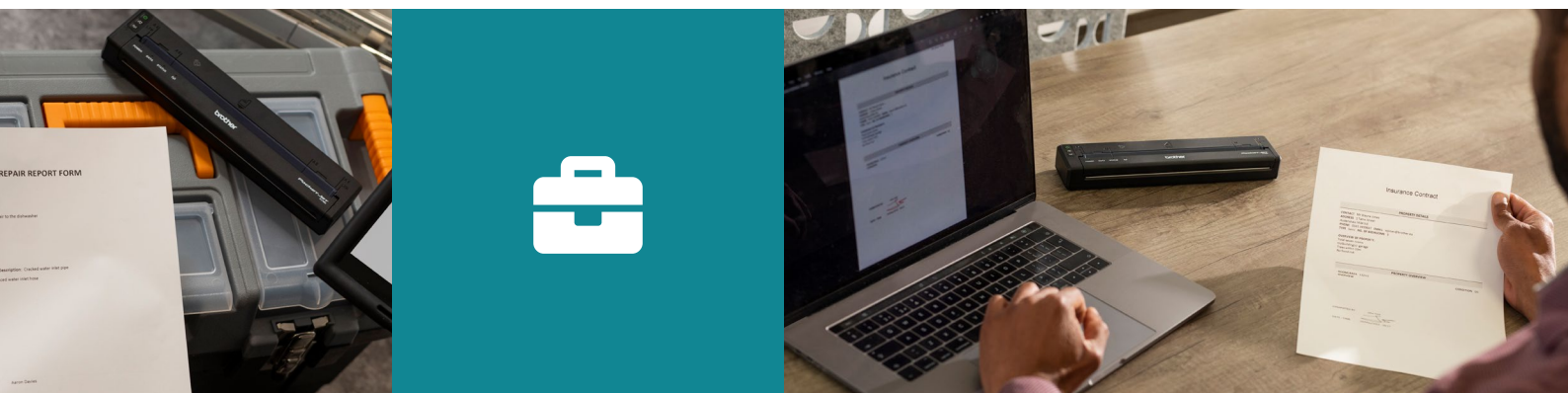
- Invoices
- Quotes
- Financial plans
- Contracts

Mobile Service Teams

Service teams, including mobile engineers, can now leave hard copies of documents at the job just completed, increasing efficiency, accuracy while adhering to legislation requirements.

Applications Include:

- Invoices
- Service reports
- Maintenance reports
- Replacement part orders



Specification and Features

| | PJ-822 | PJ-823 | PJ-862 | PJ-863 | PJ-883 |
|------------------------------|--|---|--|---|---|
| GENERAL | | | | | |
| Drop Protection | 1.2m (with PA-RC-001) | | | | |
| Display | 3 LED's (power, data and error) | | 4 LED's (power, data, status and radio) | | |
| Buttons | Power and Feed Button | | Power, Feed and Bluetooth Button | | Power, Feed and Bluetooth/Wi-Fi Button |
| PRINTING | | | | | |
| Engine | Direct Thermal | | | | |
| Standard Memory | 256Mb, 64Mb Flash | | | | |
| Print Speed | 13ppm with battery | | | | |
| Print Resolution | 203 x 200dpi | 300 x 300dpi | 203 x 200dpi | 300 x 300dpi | |
| Print Area | Configure with printer driver (min. 95mm x 42mm - max. 207mm x 2531mm) | Configure with printer driver (min. 95mm x 42mm - max. 208mm x 2531mm) | Configure with printer driver (min. 95mm x 42mm - max. 207mm x 2531mm) | Configure with printer driver (min. 95mm x 42mm - max. 208mm x 2531mm) | Configure with printer driver (min. 95mm x 42mm - max. 208mm x 2531mm) |
| Emulation | 1.Raster 2.ESC/P 3.PTouch template 4. ZPLII | | | | |
| Fonts | ESC/P_P Bitmap font: Gothic (16, 24, 32dot), Letter Gothic Bold, Helsinki (16, 24, 32, 48dot), Brussel, San Diego, Broughham (24, 32, 48dot) Outline font: Gothic, Letter Gothic, Helsinki, Brussel (Max: 400dot) ZPL Bitmap font: A,B,C,D,E,F,G,H Outline font: 0 Linear Barcode: Code39, Code93, Code128, ITF, UPC-A/E, EAN-8/13, GS1-128 (UCC/EAN-128), GS1 DataBar (RSS), MSI, Industrial 2of5, Postnet 2D Barcode: PDF417/MicroPDF417, Data Matrix, Maxicode, QR Code, Micro QR Code, Aztec | | | | |
| PAPER HANDLING | | | | | |
| Standard Paper Tray Capacity | A4 (100 sheet / pack) A4 width x 30M Roll Paper (6 pcs / box) | | | | |
| General Media Size | Cut Sheet Paper: 148 - 216mm (W) x 210 - 356mm(L) Roll Paper: 210 - 216mm (W) x Roll size(L) Media Weight Max: 0.16mm | | | | |
| CONNECTIVITY | | | | | |
| Interface | USB 2.0 Full Speed (Type C) | | USB 2.0 Full Speed Bluetooth | | USB 2.0 Full Speed IEEE802.11b/g/n (Infrastructure Mode) IEEE802.11b/g/n (Adhoc Mode) IEEE802.11g/n (Wireless direct) Bluetooth |
| USB | USB 2.0 Full Speed (Type C) | | | | |
| Wireless Interface | No | | | | 2.4GHz/5GHz IEEE 802.11a/b/g/n (Infrastructure Mode) IEEE 802.11g/n (Wireless direct) IEEE 802.11d/i |
| W-Fi Direct | No | | | | Yes |
| MFi | No | | Yes | | |
| Bluetooth | No | | Ver 5.2 (Classic + LE) Supported profiles: SPP, OPP, HCRP (Bluetooth Classic), GATT (Low Energy) Supported protocol: iAP | | |
| NFC | No | | Yes (for Bluetooth pairing) | | |
| Android Print Service Plugin | No | | Yes | | |
| iPrint&Scan | No | | Yes (iOS/Android) | | |
| Mobile Deploy | No | | Yes (iOS/Android) | | |
| Mobile Transfer Express | Yes (Android) | | Yes (iOS/Android) | | |
| AirPrint | No | | | | Yes |
| Mopria™ | No | | | | Yes |

| | PJ-822 | PJ-823 | PJ-862 | PJ-863 | PJ-883 |
|----------------------------------|--|--------|--|--------|--|
| NETWORKING | | | | | |
| Wireless Security | No | | | | Infrastructure: Open System (None/ WEP (64/128 bit)), Public Key Authentication (WEP), WPA-PSK/WPA2-PSK/ WPA3-SAE (TKIP/AES) LEAP (CKIP) EAP-FAST (TKIP/AES), PEAP (TKIP/ AES), EAP-TTLS (TKIP/ AES), EAP-TLS (TKIP/ AES), EAP-TTLS (TKIP/ AES) WiFi Direct: WPA |
| Network Management | No | | | | Windows: BRAdmin Professional, BRAdmin Light, Web Base Management Mac: Web Base Management Linux: Web Base Management |
| SOFTWARE | | | | | |
| Printer OS Compatibility | Windows 8/ 8.1 / 10 / 11 Windows Server 2012 / 2012 R2 / 2016 / 2019 / 2022 Mac OSX 10.15, macOS 11-12 Linux red Hat / Debian | | | | |
| Mobile Applications | Android: Mobile Transfer Express, Support Centre iOS: Support Centre | | Android: iPrint&Scan, Mobile Transfer Express, Mobile Deploy, Print SDK Demo, Print Service Plugin, Support Centre iOS: Mobile Transfer Express, Support Centre | | |
| Mobile SDK | Android | | iPhone/iPad, Android | | |
| Printer Driver Functions | Paper Size, Paper Type, Roll Printer case, Form Feed, 2/4/6/9/16 pages in 1, Density Adjustment, Scaling, Mirror, Reverse, Watermark, Header-Footer | | | | |
| Template Transfer to Machine | Yes | | | | |
| Software Available | Windows: Ptouch Editor, Printer Driver, Printer Setting Tool, Transfer Express Mac: Ptouch Editor, Printer Driver, Printer Setting Tool, Transfer Express Linux: Printer Driver | | | | |
| OPTIONAL ACCESSORIES | | | | | |
| Optional Power | Rechargeable Li-ion Battery 10.8V 1750mAh (PA-BT-002) AC Adapter 15 V/ Charger (PA-AD-600A) Car Adapter, Wired, 4267mm (PA-CD-WR) Car Adapter, CigPlug, 3048mm (PA-CD-CG) USB Type C Charger (PA-AD-003) | | | | |
| Optional Other | Paper Roll Holder (PA-RH-600) Paper guide (PA-PG-003) | | Paper Roll Holder (PA-RH-600) Paper guide (PA-PG-004) | | |
| Optional Car Mount | Permanent Car Mount (PA-CM-500) | | | | |
| Optional Carry Case | Vinyl Carrying case (PA-CC-500) Roll Printer Case, 1.2m drop resistant and IP54 rated (PA-RC-001) Rubber Case, 1.2m drop resistant (PA-RB-001) | | | | |
| ENVIRONMENT | | | | | |
| Humidity | Operating Humidity: 20 to 80% Storage Humidity: 10 to 90% | | | | |
| Temperature | Operating Temperature: -10 to 50°C Storage Temperature: -20 to 60°C | | | | |
| CONSUMABLES | | | | | |
| Consumables | A4 thermal paper sheets (100 sheets), 75gsm, 3 years (PA-C-411) A4 thermal paper sheets (100 sheets), 75gsm, 20 years (PA-C-411-20YR) A4 width thermal paper roll x (15m) or approx 50 sheets, 6 pack, 64gsm, 3 years (PA-R-411B) A4 size perforated roll paper (6 rolls per box) 100 pages per roll (A4-Perforated-Roll) | | | | |
| POWER SUPPLY | | | | | |
| AC Adapter | Optional AC Adapter 15 V/ Charger (PA-AD-600A) | | | | |
| Battery Life | Li-ion battery: approximately 600 sheets (printing duty 1.9% and using fully charged new Li-ion battery via USB at 23°C) Approx 300 charge/discharge cycles 2 hours with AC Adapter (PA-AD-600A, option) 2 hours with DC Vehicle Adapter (PA-CD-600CG/WR, | | | | |
| Auto Power Off | Yes | | | | |
| WEIGHT & MEASUREMENTS | | | | | |
| Size | 255(W) x 55(D) x 30(H) mm | | | | |
| Weight | - 430g (excluding Battery, paper) - 610g (with battery) | | | | |
| INCLUDED ITEMS | | | | | |
| Warranty | 1 Year Return To Base | | | | |
| Carton Contents | Machine, Dummy battery, Quick Setup Guide, USB Type C cable, Product Safety Guide, Head cleaning sheet | | | | |



Step 1: Choose your printer

Model Comparison

| | PJ-822 | PJ-823 | PJ-862 | PJ-863 | PJ-883 |
|--|--------|--------|--------|--------|--------|
| USB Type-C | ✓ | ✓ | ✓ | ✓ | ✓ |
| Bluetooth interface | | | ✓ | ✓ | ✓ |
| Wi-Fi (Adhoc/Infrastructure/Wireless Direct) | | | | | ✓ |
| 203 x 200 dpi print resolution | ✓ | | ✓ | | |
| 300 x 300 dpi print resolution | | ✓ | | ✓ | ✓ |
| Template download/printing mode | ✓ | ✓ | ✓ | ✓ | ✓ |
| ESC/P & Brother command modes including ZPL2 emulation | ✓ | ✓ | ✓ | ✓ | ✓ |
| MFi | | | ✓ | ✓ | ✓ |

Step 2: Choose your power options

PA-BT-002

Li-ion
rechargeable battery



PA-CD-600WR

12V car adapter
(permanently wired)



PA-AD-600A

AC adapter



PA-AD-003

AC adapter for
USB Type-C*

* For charging only



PA-CD-600CG

12V car adapter
(cigarette socket)





Step 3: Choose your case and mounting option

PA-RH-600

Paper roll holder



PA-CM-500

Car mounting kit



PA-RB-001

Protective cover



PA-PG-003

Paper guide for
USB only models



PA-RC-001

Roll printer case



PA-PG-004

Paper guide for
BT / Wi-Fi models



PA-CC-500

Carry case



Step 4: Choose your paper

PA-R-411

A4 paper roll
(6 rolls per box)



PA-C-411

A4 cut sheet paper - 20 year
archive life (100 sheets)



A4-PERFORATED-ROLL

A4 perforated paper roll
(6 rolls per box)



brother

at your side

Contact:



brotheraustralia



Brother International Australia



BrotherAU

www.brother.com.au

Brother International Australia

All specifications correct at the time of printing and are subject to change. Brother is a registered trademark of Brother Industries Ltd. Brand product names are registered trademarks or trademarks of their respective companies.